

# CENTRAL IOWA WORKS

## JOB DEVELOPERS GROUP



CIW carefully tracks outcomes on an individual level. Between October 1, 2011, and December 31, 2014, it has:

Served **1,222** job seekers

Enrolled **886** individuals in training/education

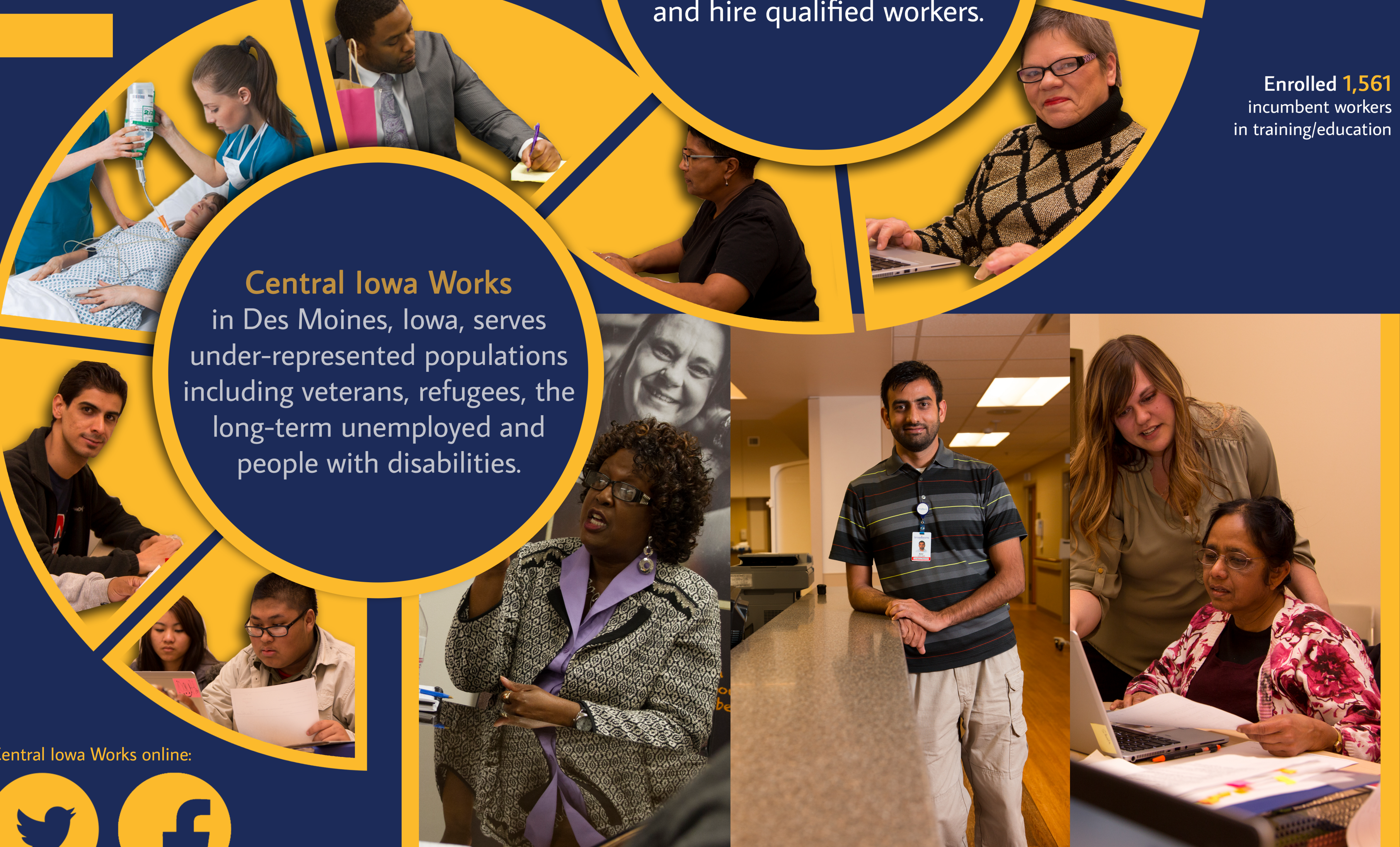
Placed **608** individuals in jobs

Served **1,639** incumbent workers

Enrolled **1,561** incumbent workers in training/education

The No. 1 goal of **Central Iowa Works** is to close the skills gap while helping employers recruit and hire qualified workers.

**Central Iowa Works** in Des Moines, Iowa, serves under-represented populations including veterans, refugees, the long-term unemployed and people with disabilities.



Learn more about Central Iowa Works online:



## BUILDING LADDERS

### INDUSTRY PARTNERS

#### Advanced Manufacturing

TPI, Vermeer, Bridgestone, John Deere, Danfoss, General Mills, DuPont, Barilla, Kreg Tool, 3M, Emco, Emerson, Van Gorp, Kemin

#### Health Care

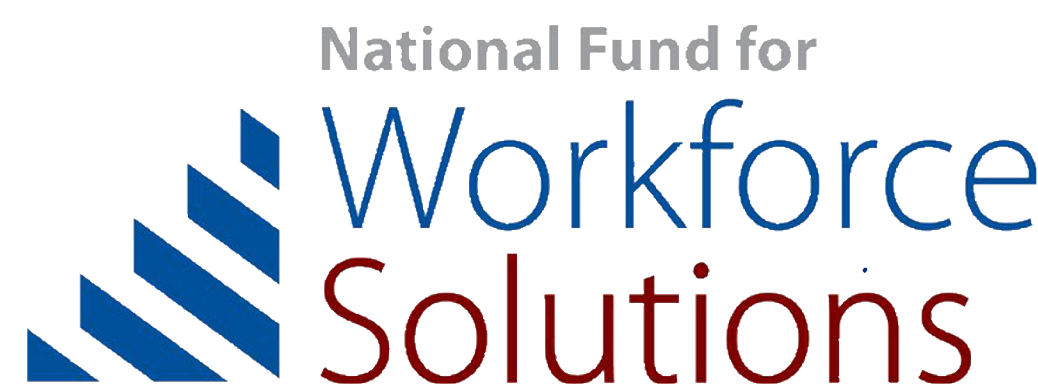
Broadlawns, Glen Oaks, HCI Care Services, VNS, Mercy, Mercy at Home, UnityPoint Health, UnityPoint Clinics, UnityPoint at Home, Wesley Life, H.O.P.E.

#### Energy/Construction

Iowa Laborers, Insulators, Sheet Metal, Master Builders, Plumbers and Steamfitters

#### Financial Services

Marsh, Bankers Trust, Nationwide, Wells Fargo, Citi, Bank of the West, Principal, Wellmark, Iowa Credit Union League, U.S. Bank



[www.CentrallowaWorks.org](http://www.CentrallowaWorks.org)